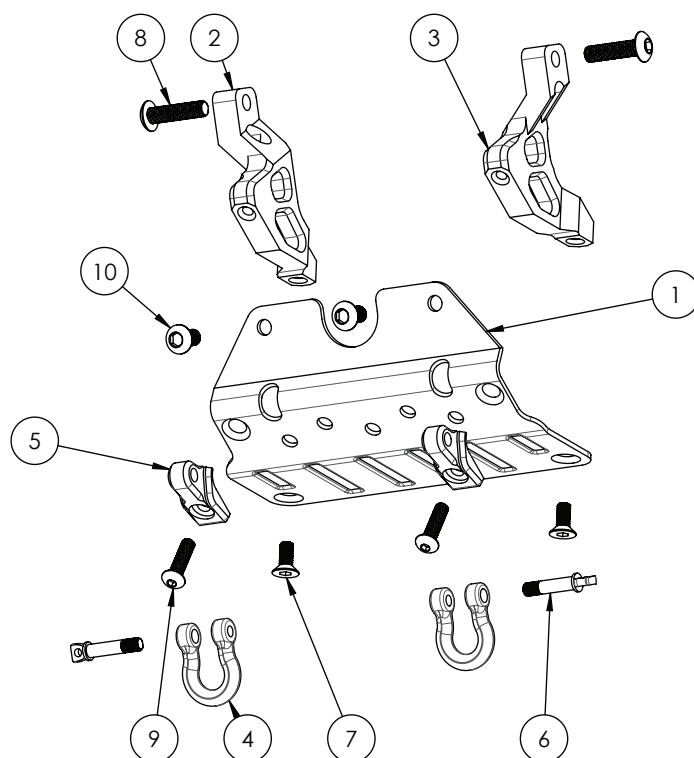


## INSTALLATION MANUAL

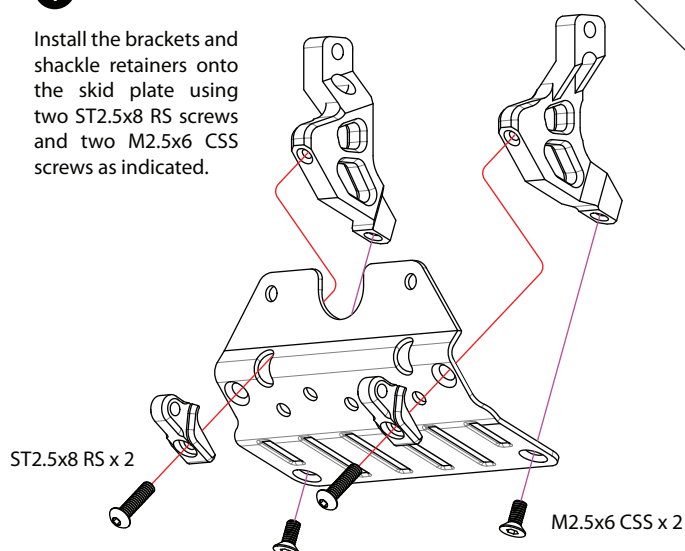
### Parts Included:

	Qty.
(1) Stainless Steel Front Skid Plate	1
(2) Aluminum Bracket (Right)	1
(3) Aluminum Bracket (Left)	1
(4) Aluminum Shackle	2
(5) Aluminum Shackle Retainer	2
(6) Stainless Steel Lock Pin	2
(7) M2.5 x 6 CSS Screws	2
(8) M3 x 12 RS Screws	2
(9) ST2.5 x 8 RS Screws	2
(10) M3 x 6 RS Screws	2



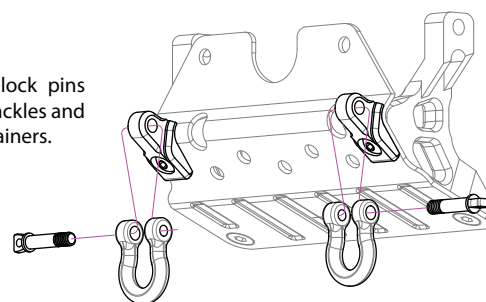
**1**

Install the brackets and shackle retainers onto the skid plate using two ST2.5x8 RS screws and two M2.5x6 CSS screws as indicated.



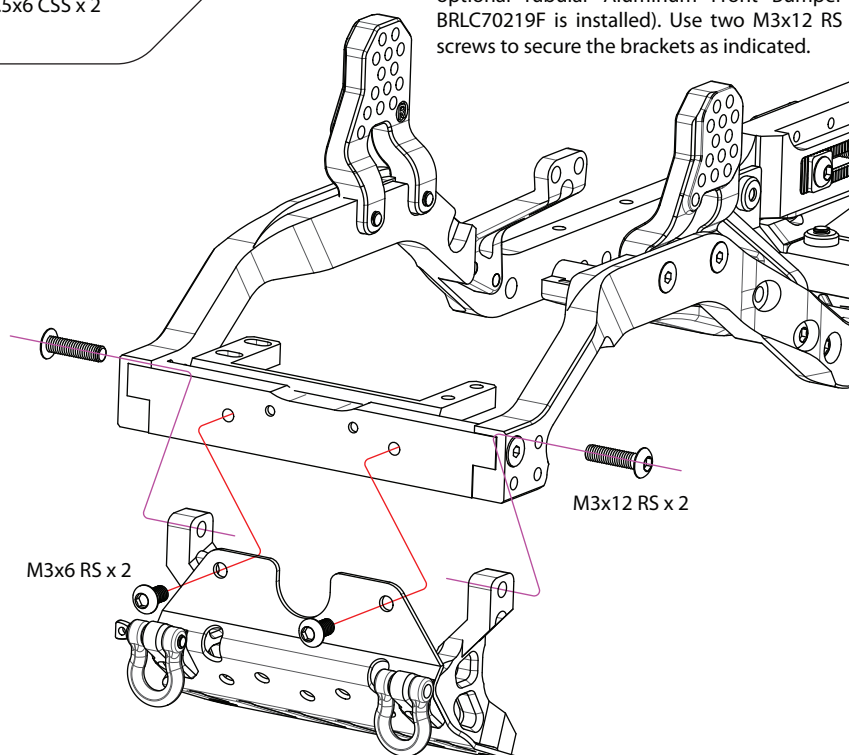
**2**

Insert the lock pins into the shackles and shackle retainers.



**4**

Secure the skid plate with two M3x6 RS screws (use two M3x5 hex cap screws instead if the optional Tubular Aluminum Front Bumper BRLC70219F is installed). Use two M3x12 RS screws to secure the brackets as indicated.



**3**

Release the steering servo mount and move it to the indicated position to provide enough space for the brackets.

